

10c

Armour Tech News

10c

Vol. VI. No. 1

Armour Institute of Technology, Chicago, Illinois

Monday, September 22, 1930

D. L. HELLER, '24 KILLED IN FREAK AIR ACCIDENT

Plane Crashes Into Lake Near South Haven at High Speed

VISIBILITY BLAMED

Duane L. Heller, '24, and his co-pilot, Bert E. Kogle, were killed instantly when their plane crashed into the lake five miles south of South Haven on July 6. The two were blazing a new air route between Chicago and Mackinac Island for the Continental Airways, Inc., when they got lost in a fog.

The plane took off in a six passenger Travelair aquaplane from the ramp at the foot of Jackson Boulevard at about six o'clock in the morning. At eight o'clock they were sighted in the fog by Miss Mary Ann Boetticher of Chicago, who was on a vacation at State Park, near South Haven.

Eye-Witness' Story

Miss Boetticher's story, as given to the Chicago Tribune, follows:

"I heard the roar of an airplane and looked up. The plane was flying so low that I could have reached up and touched it with my paddle. For a moment I thought I was going to be hit. Evidently the pilot saw me and veered suddenly out into the lake to avoid the bluffs on the shore. I saw one wing strike the water as the plane turned. The next minute the plane plunged into the water. Its tail floated up slowly."

The force of the impact had torn the plane in two. The wings, the motor, and part of the fuselage were at the bottom of the lake. The body of Kogle was recovered soon after the accident occurred, but that of Heller could not be found until some time later.

Received M.E. in '28

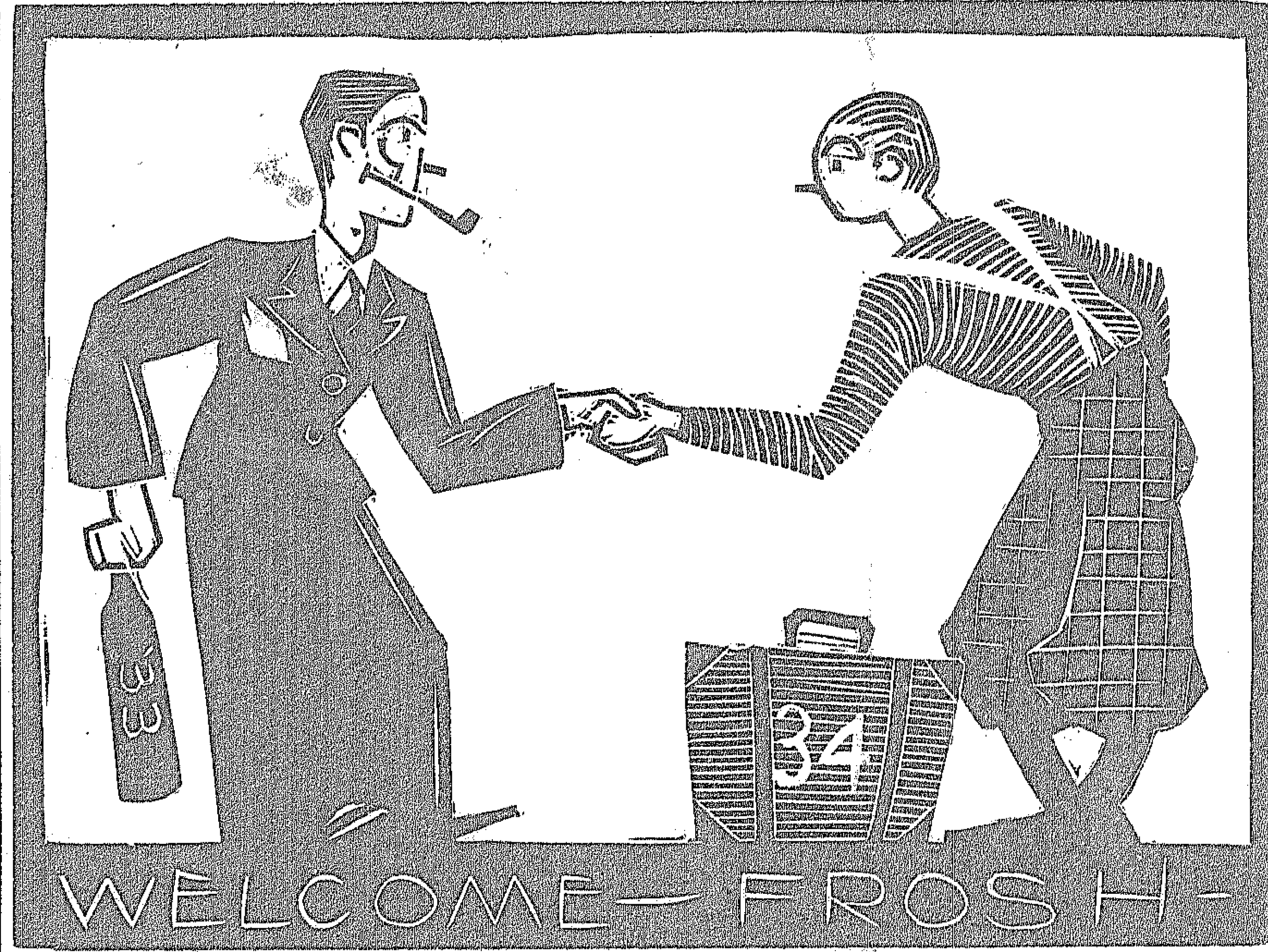
Don Heller was graduated from Armour in 1924 with the degree of B.S. in mechanical engineering. He did graduate work and in 1928 received the degree of M.E. He served as a Cadet Flyer for a number of years at March Field, Los Angeles, Cal. When the Continental Airways was established, he became connected with them and at the time of the accident had a position of superintendent with this firm. Heller was a member of Theta Xi fraternity, and while working in Chicago stayed at the Theta Xi house.

The body was interred at Acacia cemetery on July 16. Several fraternity brothers served as pallbearers.

Nast Fellowship Won by Dobberman

Marvin R. Dobberman, June '30, who was awarded a scholarship to the fifth annual summer session of the foundation for architecture at Lake Forest College, has received a fellowship carrying a stipend of fifteen hundred dollars as the results of his work there.

The fellowships, two in number, were the gift of Conde Nast of New York, and were awarded at a banquet closing the summer session. The jury of awards was comprised of David Adler and William J. Smith of Chicago, and Arthur Schureliff and Fletcher Steele of Boston, with A. A. Carpenter as lay member. The banquet was attended by the board of trustees of the foundation, the jury of awards, students, and alumni.



Carved in Wood by the Old Master, Dave C.

Date of Tau Beta Pi Convention Changed

The date for the national convention of Tau Beta Pi, honorary engineering fraternity, which is to be held at Lehigh University has been changed to October 9, 10, and 11. Fred Attwood, Ch. E. '31, president of the local chapter, is to be a delegate to the convention.

The feature of the convention will be the unveiling of a memorial tablet to the founder of the fraternity, Professor E. H. Williams. The tablet was placed in the Memorial Building on the Lehigh University campus through a subscription fund raised last year by the members of the fraternity.

The members of the Faculty Club have installed a Kennedy radio in their club rooms in the Mission. As yet, little more than interference has been received.

Jennings Retains His National Parks Title

George Jennings, former Armour student and formerly captain of the tennis team, successfully defended his title of national public parks champion on August 24. He defeated Dooly Mitchell of Washington in straight sets in the finals, 6-4, 7-5, 6-1. Mitchell took the first three games of the first set, but Jennings played brilliant tennis to bring the score to four all and finally 6-4. Mitchell led 5-2 in the second set and thereafter was at set point five different times only to lose by his own misplays. The champion won largely on Mitchell's series of shots into the net. George took the third set without trouble.

Jennings also shared the national public parks doubles title, pairing with Jack Delara of Los Angeles to beat Tom Markey, Indianapolis, and Ed Yeomans, Washington, in straight sets.

Plan Inspection Trip To Geological Exhibit

An inspection trip for all students in the school has been planned for Wednesday, September 24. The Illinois Geological Survey has an exhibit on display at the headquarters of the Western Society of Engineers in the Engineering Building, Wacker Drive and Wells. Dean Penn has arranged with Doctor Leighton, Director of the Survey, to take the men in two groups. The civils are to comprise the first group, which is to report at 2:00 p. m. Men of all other courses who are interested in the display are to form the second group, which will be taken thru at 3:30.

All rooms in Chapin Hall have been re-lettered during the summer. A complete directory of rooms, including these changes will be found on page four.

INFORMATION FOR STUDENTS

REGISTRATION DAYS: Monday and Tuesday, September 22 and September 23, 1930, are devoted entirely to registration, enrollment in classes, making out program cards, and such other preliminaries as are necessary in order to begin the regular work on Wednesday, September 24. A charge of one dollar is made for registration later than the dates mentioned above.

REGISTRATION: September 22; Freshmen will proceed as follows:

1. Fill out enrollment card and registration card and enroll in Electrical Engineering Laboratory on second floor.
2. Pay fees in the Library and receive a registration receipt.
3. Enroll with their instructors, who will be found in the Library and who will assist them in making out their program cards.

September 23; Sophomores, Junior, and Seniors will enroll as follows: Mechanicals with Professors Huntly and Peebles in the Strength of Materials Laboratory, basement of Main Building.

Electricals with Professors Nash and Richardson in the Electrical Lecture Room, 2nd floor, Main Building.

Civils and Architects with Professors Stevens and Head in the Civil Drafting Room, 2nd floor, Mission Building.

Chemicals with Professors Freud and Bentley in Room A, 4th floor, Main Building.

Fire Protects with Professor Finnegan and Mr. Holmes in Science Hall, 3rd floor, Main Building.

After enrollment, students should pay their fees receiving a registration receipt.

ENROLLMENT IN CLASSES: The registration receipt must be shown to the Instructor, as it entitles the

student to enter classes. No student is allowed to enroll in a class without this receipt. As soon as a student has enrolled in all of his classes, he should make out a permanent program card and leave it, with class enrollment card, at the office of the Deans. Blank program cards for this purpose may be obtained in the office of the Deans.

VACCINATION: The Medical Advisor should be consulted in regard to vaccination. He may be found in the Gymnasium, 5th floor, Main Building.

LIBRARY: Students may draw books from the Library by showing their registration receipts to the Librarian.

GYMNASIUM: Hours for exercise and class-work are to be arranged with Mr. Kraft, Instructor in Physical Training, Gymnasium, 5th floor, Main Building.

CHECK ROOM: The Check Room is located on the main floor of the Mission Building, West Tower Entrance. Students are expected to check their hats, overcoats and umbrellas.

ELEVATOR: Juniors and Seniors are the only students allowed to use the elevator.

TEXT BOOKS: Text books and all students' supplies may be obtained in the Students' Supply Store.

BOARD and ROOM: Information in regard to board and room may be obtained in the office of the Deans.

LUNCH ROOM: The Lunch Room is located at the north end of Ogden Field. Luncheon will be served between the hours of 11:30 and 1:30 P. M.

TELEPHONE: A public telephone for local and long distance calls is located at the north end of the hall, 2nd floor, Main Building.

CASHIER'S OFFICE: After September 22, all fees and deposits for lockers, keys, tools, laboratories, drawing boards, etc., are to be paid in the Cashier's Office, northwest corner, 2nd floor, Main Building.

Assembly for All New Students on Tuesday

All freshmen and new students must attend the assembly to be held Tuesday, September 23, at 10:30 in the Assembly Hall. Deans Palmer and Penn will address the students.

Civils Survey for Six Weeks

The course of field practice in surveying for the freshman civils was held at Trout Lake, Vilas county, Wis., for six weeks after the regular semester under the guidance of Professor Wells, assisted by Mr. Grafton and William Hafner. The advance party, consisting of Erickson, Casey, Jensen and Rossing, preceded the main group and had the camp in preparation for the arrival of the others.

The six weeks were spent in learning the use of the tape, transit, level, theodolite, and the other instruments used in the various types of surveying. With this general information, the more specific types of work were undertaken. Topographical work was done, both with the plane table and the stadia method, the men mapping portions of the country about the camp. Solar observations were made by means of the special apparatus for that work, and the true meridian established.

The most comprehensive piece of work undertaken was the layout of an imaginary railroad line. The freshmen made a reconnaissance survey with hand levels, and then set out a preliminary line, establishing this more accurately. The final line, with the curves definitely figured by the men is then run in, closing the season.

Recreation was furnished in the forms of swimming, fishing, and horse-shoe pitching, with the Saturday night dance at Trout Lake winding up each week. Fishing was rated only as fair this year, although the faculty seemed to have more luck, according to their tales as related on their annual visit to the camp. On the 4th of July, some of the men went into Boulder, Wisc., and saw a baseball game.

According to the reports of the men who attended camp this year, the food was excellent, the work interesting, and the six weeks most enjoyable.

Muehlberger, '20 Made New Coroner's Chemist

Dr. Clarence W. Muehlberger, '20, assistant director of Northwestern University's crime detection laboratory, has been named coroner's chemist and toxicologist by Dr. Herman N. Bundesen. The appointment was made upon the unanimous recommendation of Coroner Bundesen's advisory board of prominent physicians.

As the official chemist for the coroner, Dr. Muehlberger will make analyses of cases in which fatal poisoning is suspected by the coroner's office. He succeeds Dr. Ralph W. Webster, who died recently.

Dr. Muehlberger was graduated from Armour Institute with the degree of B. S. in Chemical Engineering. He was in the chemical warfare service during the war, immediately thereafter becoming assistant instructor in analytical chemistry at the University of Wisconsin. From 1923 to 1929 he was toxicologist for the state of Wisconsin and later a special lecturer in police science work at the University of Wisconsin's extension division.

Last year he was appointed assistant director at Northwestern's crime detection laboratory and assistant professor of toxicology at that university's medical school.

275 MEN CHOSEN FROM TOTAL OF 800 APPLICANTS

Twenty-Three Men to Enroll as Holders of County Scholarships

REGISTER TODAY

Armour's reputation was again enhanced by the application of eight hundred men for the current semester, which is about a hundred more than the previous year, according to the figures released by the Office of the Deans. Inasmuch as the Institute can accommodate but a small portion of the applicants, only two hundred and seventy-five were accepted, eighteen of them being students with advanced standing.

Selection was made upon the previous record of the applicant, his personality as revealed in the interview with the Office of the Deans, and his activities in high school. About two hundred and fifty of the applicants were rejected after complying with the usual enrollment regulations, and a hundred and seventy at the time of an interview or telephone conversation.

The men chosen, as in most years, come from widely scattered parts of the country, and comprise the most promising group of applicants. No foreign students were taken, as U. S. citizenship is a requirement for matriculation.

Scholarship Awards

A scholarship is offered to one student from every high school in Cook County, and while every school has not taken advantage of this opportunity, twenty-one men have been sent as the holders of a full scholarship and two men as the joint holders of a half scholarship apiece. These men, and their respective high schools are as follows:

- Argo—M. LeCaron
- Austin—G. T. Korink
- Barrington—D. Landwer
- Bloom Township—W. Nicolai
- Bowen—H. O. Gerhardt
- Calumet—E. Lundin
- Crane—H. Kass
- Evanston—H. D. Little
- Englewood—P. Machinis
- Harrison—G. M. Reed
- Hyde Park—G. Nelson, A. F. Johnson

- Lake View—G. E. Sergeant
- Lane—R. A. Ekroth
- Lindblom—V. Rimsha
- Lyons Township—J. Bonnell
- Marshall—H. Feldman
- Morgan Park—D. Fornell
- New Trier—J. L. Brenner
- Parker—T. Keich
- Schurz—W. Hoyer
- Senn—B. Laestadius
- Tilden—F. Dvorak

In an effort to make the general registration as efficient as possible, letters were mailed to the men prior to registration day, requesting that they bring their tuition in the form of checks, drafts, or money orders.

Tech News Staff Holds Meeting Wednesday

There will be a meeting of the Armour Tech News Staff on Wednesday at two o'clock. All members of both the editorial and business staffs are expected to be present. Any new men interested in working on either the editorial or business staff should report at this time. The meeting will be held in the Tech News office, third entrance, first floor of Chapin Hall.

Armour Tech News

Student Publication of the
ARMOUR INSTITUTE OF TECHNOLOGY
CHICAGO, ILLINOIS

Published Weekly During the College Year
SUBSCRIPTION RATES

\$2.00 Per Year Single Copies, 10 Cents Each



THE STAFF MANAGING BOARD

Editor-in-Chief.....Fred Attwood, '31
Managing Editors.....{ Arthur Jens, '31
 { Alvin Auerbach, '31
Business Manager.....Frank Spalding, '31
Faculty Advisor.....Professor Walter Hendricks

AN EXPLANATION AND AN APPEAL

A subscription drive for the Armour Tech News is now under way. It is necessary that the number of subscriptions to be obtained this semester exceed by one hundred the number obtained last semester in order for the paper to continue.

Financial difficulties encountered because of the staff's attempt to give the student body too much value in return for the subscription price have made it necessary to practice economy to the extreme. It is for this reason, and not because we are trying to "fleece the public," that we are charging ten cents for this first issue. In the past it has been the custom to distribute the first issue of each semester free of charge to the student body. This year, we have entailed an added expense in having the complete program schedule set up on the third page. We feel, however, that the addition of this feature has increased the value of the issue, and hope that the student body will consent to the ten cent tax for the reason that a convenient form of the complete program schedule is invaluable to the student in making out his semester's program.

It rests solely with the students as to whether or not the News is to continue. The interest with which each issue is greeted is an evident sign of the value of the publication, but the mere fact that the News is popular does not help us meet our financial obligations. In too many cases the men share the paper with friends or fraternity brothers, while this economy may be ideal for the men it is slowly driving us to extinction. It took a great many years of planning and working to launch the News, and it would be a most inglorious finish if we should be forced to shut down for lack of whole-hearted support.

The addition of this feature is in keeping with the Tech News policy of serving the student body to its fullest extent. We hope that this policy is appreciated, and the appreciation shown in the return obtained on our subscription drive.

F. B. A.

WHY COLLEGE?

A college education seems lately to have been evaluated by each and every semi-authority throughout the country, but with results not always easy to distinguish. We have been told by some that it is the greatest asset any man can have, and by others paradoxically, that it is a waste of four years.

The June issue of the *American Magazine* carried an article by a member of the graduating class of Bowdoin College, in which the writer found that after four years of college training, he was utterly unfit to face the business world. Similarly, the *Chicago Tribune* ran a letter on their editorial page in which another graduate of a liberal arts course found that his four years of college, which cost him a great deal of deprivation, were of no immediate asset to him.

In contrast to the rather hopeless situation facing these men, take the graduation class of 1930 of the Institute. In most cases, the men had arranged for positions upon graduation, and in lines of endeavor that were in fitting with their training. Despite the current humorous articles to the contrary, we have heard of no prospective bond salesman, but rather a series of interesting and fairly well paid positions in engineering. A glance through the Institute catalog will show at a glance that the majority of the past graduates are men well up in their respective fields, and while a few may have digressed from the strictly engineering work, the training they have received must have proved invaluable to them.

It is with evident sincerity that we can say that four years at Armour can never be classed as a waste of time; regardless of whether the men plan to follow straight engineering or sales work, the training received cannot be disregarded.

It is also quite heartening to note that the undergraduates are usually able to secure temporary summer positions, and be of real use to their employers. The training that the Institute gives a man is not merely four years of book knowledge topped with a pretty parchment, but a means of being a useful factor in a profession that is making the most gigantic strides of any in the world.

We do not condone the liberal training; we feel that is of great value to a man who is not in immediate need for a livelihood. However, some men, and especially those who are typified by the letter in the *Tribune*, seem to think that the magic words, "College Education" will open untold doors for them. We live in a practical world, and those who must face it can best do so by meeting it with its own weapons, a practical education.

A. B. A.

"The Slipstick"

Cleave to "The Slipstick"; let
the Slapstick fly where it may.

AIDS TO LOQUACITY

When'er a hen lays eggs, with each
She is impelled to make a speech.
The selfsame urge stirs human bones,
Whenever men lay cornerstones.

H. C.

We wonder if the absent-minded professor that poured the cream on his head and scratched his oatmeal was the same one that rocked the fried chicken to sleep and ate the baby.

The Co-Ed.

Waste Energy

We also have heard that a famous ball player has recently caught a ball dropped from a height of 800 feet. Think of the energy that is wasted. Some one should have designed a water-jacketed glove and presented it to him so that the heat of impact would have heated the water. Then hook it up to a steam engine and light up the town.

This being just a pastime the cost would be nothing. As a matter of fact the ball player gets a lot of publicity from the escapade.

—Rennie's Notebook.

"So you're a young man with both feet on the ground, eh? Well, what do you do for a living?"
"I take orders from the chap with both feet on the desk."

THE WHOLE WORKS

Cliff: "I was out with the new Jones girl last night."
Julius: "What's she like?"
Cliff: "Oh, everything: beefsteak, potatoes, squab, lobster, salad, pie, ice cream—everything."

—Dollar Bill

He was spending his first year at college, and his parents anxiously awaited the arrival of his first letter. It was not received for more than a week and was short and to the point.
"Dear People:—I don't think I shall be able to send you many letters while I am here. You see, when things are happening I haven't time to write, and when they aren't happening I haven't anything to tell you. With love to all, Harry."

"Well, after your first seeing the talking pictures, how do you like them?"
"All right; but to tell the truth, I prefer the old un-speakable ones."

VICTORY

This department takes great pride in the fact that two of its men have won prizes in the Joke Contest conducted by one of the evening papers. Our baseball team won't be hailed as the very best in the world, but we're not so sure about our humor column.

Extracts from Exams

A solid will remain in any state you put it, while a liquid will fill only what you want it.
The Hundred Year's War was fought at the French grounds.

Aero Student, winding up brilliant speech on "Airships":
"See how Wright kept at his aeroplane, in spite of the fact that he broke two or three legs!"

The only redeeming feature of a pawn shop is the ticket.

—REM (not an ad)

Now We'll Tell One

College Studes in Paris: "Coupla choclit sodies, please."

Starting the new semester we would like to announce that contributions are always gladly accepted. First floor, main building. Don't forget.

The Judge: "You are charged with running your car sixty miles an hour, smashing a telegraph pole, going through a plate glass window, and injuring six people. What do you say?"

Lovely Young Lass: "Don't the fifteen dollars I pay for my license entitle me to any privileges?" —D. B. C.

"What are you doing, Mike, fishing?"
"Naw! drowning worms."

"You say your sister makes up jokes? Then she's a humorist."

"No, she works in a beauty parlor."

Some friendly advice to freshmen; Tend to your three R's and DON'T buy any tickets for the swimming pool on the sixth floor.

—Phil J.

Russell H. Ewing

(A Biographical Sketch)

Russell H. Ewing, who is joining the faculty of the Institute as an assistant professor in the department of History and Economics, will replace Mr. Umbreit. He will present the junior lectures in principles and problems of economics.

Mr. Ewing first studied at the University of Missouri, being there from 1916 to 1918. At that time he saw active service with the American Expeditionary forces in Europe, returning to the United States in 1919. He then entered the University of Minnesota in their law school and in 1922 received the degree of Bachelor of Laws and Literature. During the fall of 1922, he was admitted to the Minnesota State Bar Association.

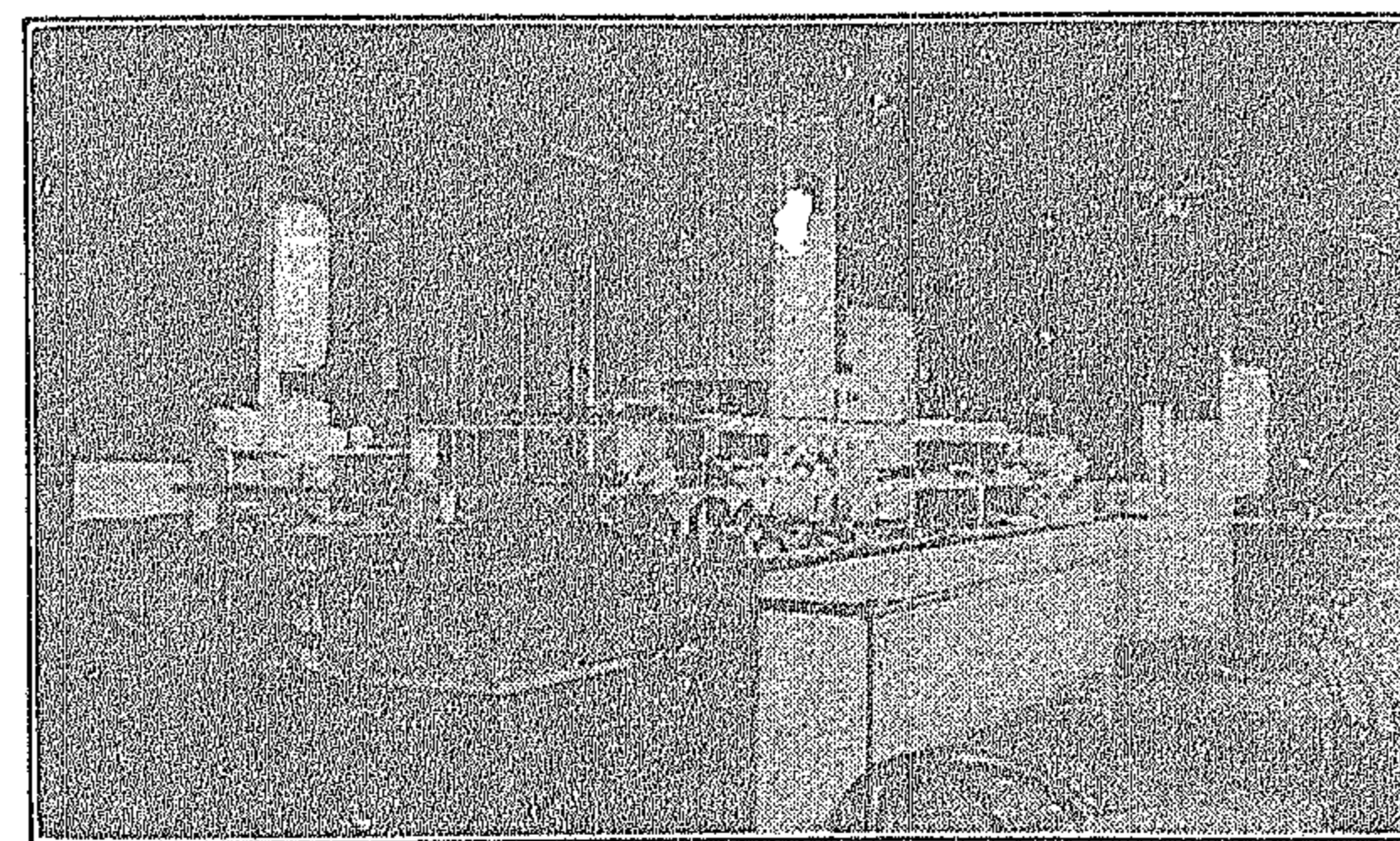
Continuing his graduate work, Mr. Ewing stayed at the university until 1923, receiving the degree of Bachelor of Arts. His graduate work was then further pursued at Columbia University during 1924, having won a graduate scholarship. He received his Master of Arts degree in 1924.

Professor Ewing has had a wide range of teaching experience, having taught at the University of Illinois, Oregon State College, Hunter College of the City of New York, and the City College of New York.

He has also published four volumes on his work in political science, covering the field from various different angles.

All the fraternity houses have been undergoing cleaning and decorating operations for the past two weeks, in order to be in shape for the first days of school. Several of the members at each house volunteered to take part in this work which has become a tradition on the campus.

NOW OPEN



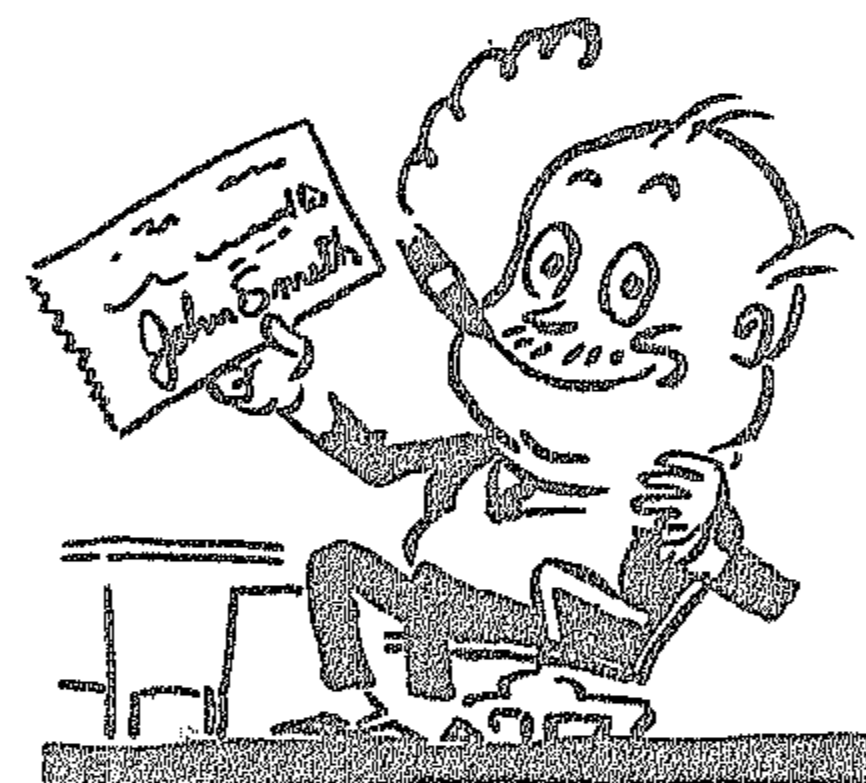
A place where you are assured of clean and wholesome food at prices within reason—

ARMOUR TECH CAFETERIA

Located at the

North End of Ogden Field

ALUMNI



Subscribe Now for
This Semester's

ARMOUR TECH NEWS

MAILING SUBSCRIPTION RATE

\$1.00 a Semester

COMPLETE PROGRAM SCHEDULE

INSTRUCTIONS FOR USE OF SCHEDULE

The program schedule printed on this page is the complete and official schedule authorized by the Deans' Office. The use of this simplified schedule is best explained by an example. For instance, assume the program to be made out is that of a Junior Civil. He will turn to page 25 in the Abstracted Bulletin of the Institute. Here he will find the subjects listed which must be taken in the first semester of the Junior year. After each course will be found a number such as English 5, M. E. 30, or C. E. 12. These numbers correspond to the numbers given in the schedule given above. The number C. E. 12 would natu-

ally be found under the Civil department courses, and opposite this number are given the days of the week, the time, the room, and the instructor. In this way, each course can be followed through until a complete is arranged. Any conflicts found in making out a program should be reported to the Deans' Office at once. Note: A dash in the column under Dept. indicates that the course is open to students of all departments. Key: Dfg. R.—drafting room; P. L. R.—Physics Lecture Room, second floor Main building; E. L. R.—Electrical Lecture Room, second floor, Main building; Sc. Hall—Science Hall, third floor Main building.

MECHANICAL

Departmental	Course No.	Course	Dept.	Day of Week	Time	Room	Instructor
Mechanical	M. E. 1	Dev. of Heat Eng.	M. E.	M. Th.	10:30	B. Chapin	Nachman
	M. E. 1	Dev. of Heat Eng.	M. E.	T. F.	10:30	B. Chapin	Nachman
	M. E. 2	Mechanism	M. E.	M. W. F.	11:30	C. Chapin	Swineford
	M. E. 4	Machine Drawing	M. E.	M. W. F.	2:10	Dfg. R., Chapin Hall	Winston
	M. E. 6	Valve Drawing	M. E.	M. W. F.	11:30	A. Machinery	Swineford
	M. E. 8	Adv. Mach. Drawing	M. E.	T. Th. F.	2:10	Dfg. R., Chapin Hall	Swineford
	M. E. 10	Heat Power Eng.	M. E.	Daily	10:30	A. Machinery	Gebhardt
	M. E. 12	Thermodynamics	M. E.	M. T. Th. F.	9:30	A. Machinery	Nachman
	M. E. 13	Jr. Exp. Eng. Lab.	M. E.	T. Th. F.	1:10	A. Machinery	Lab. Instructors
	M. E. 16	El. Exp. Eng. Lab.	M. E.	Daily and Sat. A. M.	2:10	Experimental Lab.	Lab. Instructors
	M. E. 18	Sr. Exp. Eng. Lab.	M. E.	W.	11:30	C. Machinery	Lab. Instructors
	M. E. 19	Sr. Exp. Eng. Lab.	M. E.	Daily and Sat. A. M.	2:10	Experimental Lab.	Lab. Instructors
	M. E. 22	Mechanical Draw.	M. E.	M. W. Th.	2:10	Mission Bldg.	Perry
	M. E. 24	El. Mach. Drawing	M. E.	To Be Arranged	8:30	Dr. R., Main	Foster
	M. E. 26	Descriptive Geom.	M. E.	Daily and Sat. A. M.	8:30	Dr. R., Main	Foster
		Descriptive Geom.	M. E.	M. W. F.	1:10	F. Chapin	Foster
		Descriptive Geom.	M. E.	M. W. F.	2:10	F. Chapin	Foster
		Descriptive Geom.	M. E.	T. Th. F.	4:10	H. Chapin	Sear
		Desc. Geom. Dwg.	M. E.	M. W. F.	2:10	H. Chapin	Sear
	M. E. 27	Machine Design	E. E.	Sat. A. M.	8:30	Dfg. R., Main	Foster
		Machine Design	E. E.	M. T. F.	9:30	F. Chapin	Swineford
		Machine Design	E. E.	M. T. F.	10:30	A. Mission	Winston
		Machine Design	E. E.	W.	10:30	C. Machinery	Secrist
		Machine Design	Ch. E.	Th. F.	11:30	F. Chapin	Sear
		Machine Design	F. P. E.	M. W. F.	11:30	F. Chapin	Lab. Instructors
	M. E. 30	Exp. Eng. Lect.	E. E.	D. Chapin	10:30	Exp. Eng. Lab.	Lab. Instructors
		Exp. Eng. Lect.	C. E.	M. T. Th.	2:10	C. Mission	Lab. Instructors
		Exp. Eng. Lect.	C. E.	F.	9:30	C. Mission	Lab. Instructors
		Exp. Eng. Lect.	C. E.	T. W. F. Sat. A. M.	2:10	Exp. Eng. Lab.	Lab. Instructors
		Exp. Eng. Lect.	F. P. E.	T. Th. F.	11:30	H. Chapin	Lab. Instructors
		Exp. Eng. Lect.	F. P. E.	T. Th. F. Sat. A. M.	2:10	Exp. Eng. Lab.	Lab. Instructors
	M. E. 36	El. Heat. Power	C. E.	M. F.	10:30	B. Machinery	Winston
		El. Heat. Power	C. E.	T. Th.	1:10	C. Chapin	Winston
		Thermodynamics	E. E.	M. Th. F.	8:30	A. Machinery	Nachman
		Thermodynamics	E. E.	M. Th. F.	1:10	B. Machinery	Nachman
	M. E. 38	Pattern Shop	M. E.	2nd Fl. Mach.	2:10	Peterson	Peterson
		Pattern Shop	E. E.	M. W.	2:10	2nd Fl. Mach.	Peterson
		Pattern Shop	F. P. E.	M. W.	8:30	2nd Fl. Mach.	Peterson
		Pattern Shop	F. P. E.	Daily and Sat. A. M.	8:30	1st Fl. Mach.	Foster
	M. E. 40	Foundry	Jr. M. E.	3rd Fl. Mach.	8:30	Larson	Larson
		Foundry	Jr. M. E.	3rd Fl. Mach.	2:10	3rd Fl. Mach.	Fornhof
		Machine Shop	Sr. M. E.	M. W. F.	2:10	3rd Fl. Mach.	Fornhof
		Machine Shop	E. E.	T. Th.	2:10	3rd Fl. Mach.	Fornhof
		Machine Shop	F. P. E.	M. T. F.	2:10	3rd Fl. Mach.	Fornhof
		Machine Shop	F. P. E.	M. W.	8:30	3rd Fl. Mach.	Fornhof

ELECTRICAL

Electrical	Course No.	Course	Dept.	Day of Week	Time	Room	Instructor
	E. E. 1	Soph. Elec. Lect.	E. E.	M. W. F.	10:30	E. L. R.	Richardson
	E. E. 3	Soph. Elec. Lab.	E. E.	M. W. F.	11:30	P. L. R.	Richardson
	E. E. 5	D. C. Machinery	E. E.	M. T. W. F.	2:10	2nd Fl. Main	Richardson
	E. E. 6	Lab. Methods	E. E.	M. T. W. Th.	11:30	E. L. R.	Moreton
	E. E. 6	D. C. Lab.	E. E.	M.	10:30	C. Chapin	Moreton
	E. E. 9	A. C. Machinery	E. E.	M. W. Th.	2:10	2nd Fl. Main	Moreton
	E. E. 11	A. C. Lab. Lect.	E. E.	W.	1:10	E. L. R.	Freeman
	E. E. 11	A. C. Lab. Lect.	E. E.	W.	2:10	Dfg. R., Mission	Freeman
	E. E. 11	A. C. Lab. Lect.	E. E.	T. W. Th.	9:30	E. L. R.	Snow
	E. E. 13	Power Plants	E. E.	M. T. F.	1:10	E. L. R.	Snow
	E. E. 14	Cent. Station Des.	E. E.	F.	2:10	Dfg. R., Mission	Snow
	E. E. 16	Econ. of Eng.	E. E.	M.	10:30	D. Chapin	Freeman
	E. E. 20	Electricity Lect.	M. E.	Th.	1:10	A. Machinery	Nash
	E. E. 20	Electricity Lect.	M. E.	T. F.	2:10	2nd Fl. Lab.	Nash
	E. E. 20	Electricity Lect.	C. E.	T. Th.	9:30	B. Mission	Nash
	E. E. 20	Electricity Lab.	C. E.	M. W.	2:10	2nd Fl. Lab.	Clifford
	E. E. 20	Electricity Lab.	F. P. E.	M. W.	10:30	2nd Fl. Lab.	Clifford
	E. E. 20	Electricity Lab.	F. P. E.	Th. F.	2:10	2nd Fl. Lab.	Clifford
	E. E. 20	Electricity Lect.	Ch. E.	M. W.	9:30	C. Main	Clifford
	E. E. 20	Electricity Lab.	Ch. E.	Th. Sat. A. M.	8:30	2nd Fl. Lab.	Clifford

CIVIL

Civil	Course No.	Course	Dept.	Day of Week	Time	Room	Instructor
	C. E. 4	Higher Surveying	C. E.	M. W. F.	11:30	A. Chapin	Jacobson
	C. E. 4	Higher Surveying	C. E.	M. W. F.	1:10	A. Mission	Jacobson
	C. E. 5	Rwy. and Hwy. Location	C. E.	M. W. F.	11:30	B. Chapin	Grafton
	C. E. 5	Rwy. and Hwy. Location	C. E.	M. W. F.	1:10	B. Chapin	Grafton
	C. E. 6	Topo. Drawing	C. E.	T.	2:10	Dfg. R., Mission	Jacobson
	C. E. 7	Strength of Mtds.	C. E.	Daily	11:30	A. Mission	Phillips
	C. E. 9	Astronomy	C. E.	M. W. F.	10:30	H. Chapin	Penn
	C. E. 11	Rwy. and Hwy. Const.	C. E.	M. W. F.	8:30	C. Mission	Stevens
	C. E. 12	Stresses	C. E.	Daily	1:10	B. Mission	Wells
	C. E. 12	Stresses	C. E.	Daily	1:10	H. Chapin	Heald
	C. E. 14	Graphics Prob.	C. E.	W. F.	2:10	Dfg. R., Mission	Grafton
	C. E. 15	Masonry and Found.	C. E.	M. T. Th.	9:30	C. Mission	Ensz
	C. E. 15	Masonry and Found.	C. E.	M. T. Th.	11:30	C. Mission	Ensz
	C. E. 17	Concrete Design	C. E.	M. W. F.	9:30	B. Mission	Stevens
		Concrete Design	C. E.	Th.	2:10	Dfg. R., Chapin	Stevens
	C. E. 18	Bridge and St. Des.	C. E.	F.	11:30	C. Mission	Heald
		Bridge and St. Des.	C. E.	M. Th.	2:10	Dfg. R., Mission	Heald
		Bridge and St. Des.	C. E.	F.	2:10	B. Mission	Heald
	C. E. 20	Bridge and St. Des.	C. E.	F.	2:10	B. Mission	Heald
	C. E. 22	Econ. of Eng.	C. E.	M. F.	10:30	B. Mission	Stevens
	C. E. 23	Highway Eng.	C. E.	M. T. Th.	8:30	B. Mission	Grafton
	C. E. 25	Higher Structures	C. E.	T. W. Th.	10:30	B. Mission	Stevens
	C. E. 27	Water Supply Eng.	C. E.	M. W. F.	1:10	C. Chapin	Phillips
	C. E. 31	Aerodynamics	Daily	11:30	B. Mission	Wells
	C. E. 36	Surveying	E. E.	Sat. A. M.	8:30	C. Mission	Jacobson
	C. E. 37	Structural Design	F. P. E.	T. Th.	10:30	A. Mission	Ensz
	C. E. 39	Sanitary Eng.	Arch.	M.	9:30	Dfg. R., Chapin	Heald
	C. E. 41	Graphic Statics	Arch.	T. Th.	9:30	P. L. R.	Stevens
	C. E. 44	Steel Const.	Arch.	T. Th.	10:30	Dfg. R., Mission	Jacobson
		Steel Const.	Arch.	F.	9:30	D. Chapin	Ensz
		Steel Const.	Arch.	F.	10:30	Dfg. R., Mission	Ensz

CHEMICAL

Chemical	Course No.	Course	Dept.	Day of Week	Time	Room	Instructor
	Ch. E. 1	Gen. Chemistry	Ch. E.	M. T. W. Th.	3:10	P. L. R.	Gill
		Gen. Chemistry	Ch. E.	F.	11:30	Sc. Hall	Gill
	Ch. E. 5	Qual. Chemistry	M. T. Th. F.	8:10	3rd Fl. Lab.	Tibbals
	Ch. E. 6	Qual. Chemistry, Lab.	Daily and Sat. A. M.	8:30	3rd Fl. Lab.	Lab. Instructors
	Ch. E. 9	Qual. Chemistry, Rec.	Daily and Sat. A. M.	11:30	B. Main	Lab. Instructors
	Ch. E. 10	Quant. Chemistry	Ch. E.	W. Th.	1:10	C. Main	Tibbals
	Ch. E. 13	Organic Chem.	Ch. E.	W. Th.	2:10	4th Fl. Lab.	Tibbals
	Ch. E. 15	Organic Chem. Lab.	Ch. E.	A. Main	11:30	A. Main	Freud
	Ch. E. 17	Organic Chem.	Ch. E.	M. T. F.	2:10	4th Fl. Lab.	Freud
	Ch. E. 19	Organic Chem. Lab.	F. P. E.	M. T.	1:10	C. Main	Freud
	Ch. E. 20	Adv. Organic Chem.	F. P. E.	M. T.	2:10	4th Fl. Lab.	Ulflock
	Ch. E. 22	Chem. Eng.	Ch. E.	M. F.	9:30	B. Main	Freud
	Ch. E. 24	Chem. Eng. Lab.	Jr. Ch. E.	M. T. W.	11:30	C. Main	McCormack
	Ch. E. 26	Chem. Eng.	Jr. Ch. E.	W. Th. F.	2:10	4th Fl. Lab.	Bentley
	Ch. E. 28	Chem. Eng. Lab.	Sr. Ch. E.	T. W.	10:30	4th Fl. Lab.	McCormack
	Ch. E. 30	Gen. Metallurgy	Ch. E.	M. T. W.	11:30	C. Main	Bentley
		Gen. Metallurgy	Ch. E.	F.	9:30	C. Main	Carpenter
		Gen. Metallurgy	Ch. E.	F.	10:30	C. Main	Carpenter
	Ch. E. 32	Phys. Chem.	Ch. E.	F.	10:30	Meta. Lab.	Carpenter
	Ch. E. 33	Electro Chem., Lect.	Ch. E.	M. T. F.	10:30	B. Main	Freud
	Ch. E. 40	Electro Chem.	Ch. E.	M. T.	1:10	B. Main	Bentley
	Ch. E. 43	Indust. Chem.	F. P. E.	T. W. Th.	10:30	3rd Fl. Lab.	Bentley
	Ch. E. 45	Indust. Chem., Lab.	F. P. E.	T. Th.	2:10	B. Machinery	Schommer
		Indust. Chem., Lab.	F. P. E.	T. Th.	2:10	4th Fl. Lab.	Schommer

FIRE PROTECTION

Departmental	Course No.	Course	Dept.	Day of Week	Time	Room	Instructor
Fire Protection	F. P. E. 1	F. P. E.	Jr. F. P. E.	T. Th.	8:30	B. Chapin	Finnegan
	F. P. E. 3	F. P. E. Lab.	Jr. F. P. E.	M. W.	1:10	Underwriters	Robinson
	F. P. E. 5	F. P. E. Lab.	Sr. F. P. E.	T. Th.	1:10	Underwriters	Robinson
	F. P. E. 7	Under Stand.	F. P. E.	T. Th.	9:30	B. Chapin	Finnegan
	F. P. E. 9	Special Hazards	F. P. E.	M. W. F.	9:30	B. Chapin	Finnegan
	F. P. E. 10	C. I. P.	F. P. E.	M. W. F.	9:30	C. Chapin	Holmes
	F. P. E. 12	C. I. P.	F. P. E.	M. W. F.	8:30	B. Chapin	Finnegan
	F. P. E. 14	Schedule Rating	F. P. E.	W.	11:30	G. Chapin	Holmes
		Schedule Rating	F. P. E.	W.	2:10	Dft. E. Chapin	Holmes

ARCHITECTURE

Architecture	Arch. No.	Course	Dept.	Day of Week	Time	Room	Instructor
	Arch. 3	Freehand	Fr. Arch.	M. F.	10:30	Art Institute	Krehbiel
	Arch. 7	Freehand	Soph. Arch.	M.	3:10	Art Institute	Krehbiel
	Arch. 9	Water Color	Jr. Arch.	F.	1:10	Art Institute	Krehbiel
	Arch. 11	Modelling	Arch.	M. W.	1:10	Art Institute	Krehbiel
	Arch. 13	Arch. Design	Arch.	M. Th.	9:30	Art Institute	Hofmeister
	Arch. 15	Arch. Design	Fr. Arch.	Daily	8:30	Art Institute	Peterson
	Arch. 17	Arch. Design	Soph. Arch.	Varies	Art Institute	Bentley
	Arch. 19	Arch. Design	Jr. Arch.	Varies	Art Institute	McCaughey
	Arch. 21	Hist. of Arch.	Arch.	M. Th.	4:10	Art Institute	Hammett
	Arch. 25	Gen. Const.	Arch.	W. F.	Art Institute	Wilmanns
	Arch. 27	Specs. & Est.	Arch.	W. F.	Art Institute	Wilmanns

MATHEMATICS

Richardson Heads Placement Bureau

A letter has been mailed out by President Raymond to alumni of the Institute telling of the formation of a Placement Bureau here at the Institute for the benefit of Armour graduates.

Donald E. Richardson, class of 1924, and Assistant Professor of Electrical Measurements has been appointed the head of this department which proposes to deal with employment problems of Alumni members. The official title of this new position is that of "Placement Counselor," and the office of the Placement Counselor is to be considered as a vocational clearing house for Armour men seeking positions, and for employers looking for men to fit in their organizations. This service is also extended to undergraduates who are interested in obtaining part-time work. Mr. Richardson is to be assisted by the members of the faculty in learning of opportunities for the alumni.

Mary Pfister Added To Library Personnel

Miss Mary Pfister has been added to the library staff as an assistant to Miss Steele, librarian. Miss Pfister was formerly librarian and English teacher at Crivitz, Wisconsin. She is an alumnus of Mt. Mary College at Milwaukee.

Many new books have been obtained for the library during the summer, among which are included the following: Seelye, "Electrical Distribution Engineering"; Condon-Morse, "Quantum Mechanics"; Brownell, "Man and His World" (twelve volumes); Dolt, "Chemical French"; Humphreys, "Rain Making"; Taft, "Essay on Conversation"; Studley, "Practical Flight Training"; Mirriam, "Chicago"; Mitchell, "Skyways"; Fraser, "Heroes of Air"; Maitland, "Knights of Air"; Pritchard, "Book of Aeroplane"; Hulse, "Arc Welding"; Ramsay, "Navigation of Aircraft"; Vanier, "Dictionary of Aeronautical Terms."

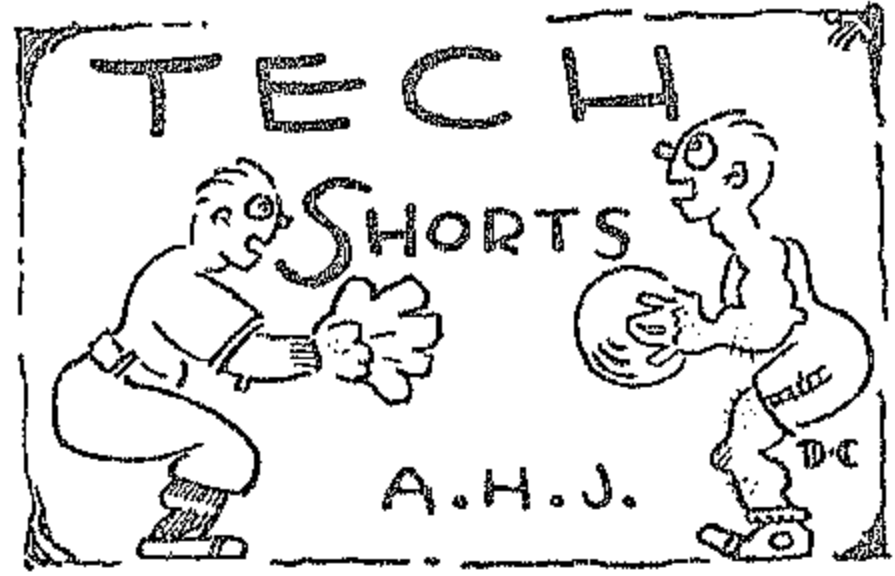
Others are: Henney, "Principles of Radio"; Ellsberg, "On the Bottom"; Manly, "Aviation"; Hinton, "Opportunities in Aviation"; Harrington, "Writing for Print"; Maeterlinck, "Magic of Stars"; Andrews, "Ends of Earth"; Menninger, "The Human Mind"; Maerz and Paul, "Dictionary of Color"; Belling, "Use of the Microscope"; Mowbray, "Insurance"; Wheeler, "Colour Photography"; Weinstein, "Precious and Semi-precious Stones"; The Aeronautical Chamber of Commerce Aircraft Yearbook; Beston, "Book of Gallant Vagabonds"; Belloc, "Richelieu"; Manly, "Death Valley in '49"; Nesbit, "After-dinner Speeches"; and Boyd, "Simon Girty."

NAVY AIRPLANE CHIEF EXHIBIT OF CIVIL MUSEUM

A Civil Engineering Museum, a project conceived and fostered by Professors Phillips and Wells, has had its beginning in the opening of two rooms at 3337-39 Federal Ave. The first acquisition is that of a complete training biplane, which is being assembled in the rooms.

This plane is of the type known as the TS-1 Training plane, and is registered as number A-6312. The plane was secured from the ninth naval district, known as the Great Lakes Air Base. Professor Roesch had the plane transported to the campus, and it is nearly completely assembled at the present time.

While the motor and instruments will not be mounted on the fuselage, the controls will be completely assembled, so that the students of aeronautics will be able to study the design and the function of the rudder, elevator, and ailerons. The structural design features will also be studied in coordination with the senior course in airplane design.



Nothing to Look Forward To For the present we have little to look forward to in the line of sports. Except for the interclass baseball series which is to take place early in October, things will remain quiet. Cross country running may be attempted this fall if sufficient interest is shown.

Coach Krafft was seen around school last week. Wonder if he's started his plans already for some championship baseball and basketball teams?

We notice that the tennis courts are undergoing renovating and resurfacing operations which should make a big difference in the matches played at Tech. We'll say that the reconditioning of these courts might even improve our own game to such an extent that we might win a match now and then.

The tennis courts are not the only thing that was resurfaced during the summer. Have you noticed the new covering on the library floor and the new rubber mats at the Main Entrance?

We see that the chemicals are getting one of their labs enlarged. All it means to us is more room for those guys to generate Aitch two Ess and gas the rest of us poor mortals.

The First of a Fleet? Tech's first airplane is on partial exhibit in the rooms on the first floor, last entrance, Chapin Hall. If you're in a walking mood, may we suggest a hike down to the exhibition hall?

We saw King Simpson pitch a game for the Clayton H. Smith Logan Square team against the Championship Mills Team. It must have been one of King's off days because four innings was all he could last. Of course he was up against stiff competition, and it was one of his first semi-pro games. We know that after a few games King would get into his stride and pitch for the Logan Squares like he used to for Tech.

Johnnie Edstrand writes us from Kansas City asking for the subscription rates to our w. k. publication. They're a dollar a semester, or two bucks a year, postage paid to any part of the United States or any foreign country.

This column was attempted by F. A., pinch-hitting for A. H. J. while the latter is on a canoe trip through the wilds of Canada with his brother and a former Armour man.

Roesch Attends Fuel Committee Meeting

Professor Daniel Roesch attended the regular meeting of the Cooperative Fuel Research committee of the S. A. E., the A. P. I., and the N. A. C. C., which was held at New York city on September 15, 1930.

The most important phase of this committee's activities at present is the study of detonation measurements and the development of two standard fuels of low and high anti-knock values, which can be blended to give any standard of reference fuel between the poorest and the best.

The Western Society of Engineers will present a lecture with a demonstration on the subject of "Exterior Lighting in Architecture." The lecture will be delivered by Edwin D. Tillson of the Commonwealth Edison Co. on Monday, Sept. 29, at 7:00 p. m. at the society rooms.

Directory of Rooms Main Building

Second Floor Physics and Electricity Lecture Rooms

Third Floor Freshman Chem. Lab. and Science Hall

Fourth Floor Rooms A, B, and C

Fifth Floor Freshman Drafting Room and Gym

Chapin Hall

First Entrance

Third Floor—Rooms A and B

Second Entrance

First Floor—Room C

Second Floor—Rooms D and F

Third Floor—Rooms E and G

Third Entrance

First Floor—Armour Tech News Office

Fourth Entrance

First Floor—Room H

Fifth Entrance

First Floor—Civil Museum

Mission Building

Basement—Room D

Main Floor—Rooms A, B, and C

Machinery Hall

First Floor—Forge

Second Floor—Machine Shop, Room A

Third Floor—Wood Shop, Room B

Fourth Floor—Foundry, Room C

An announcement of the engagement of E. C. Youngberg, '27, to Miss Eloise Allen Forbrich, a senior at Northwestern University, has been received.

Notes on Alumni

Joe Bechtold, '30, is with the Missouri Inspection Bureau at St. Louis... Walter Scott, '30, was married on the 20th of September to Miss Dorothy Hamlin of Kansas City... Emil Blomme, '30, is working at the Illinois Steel Company... Dean Banta, '30, and Gus Erland, '30, are also at the Illinois Steel Plant... Ray Shoan, '30, has been grooming golf courses during the summer months... Johnnie Manz, '29, is a student engineer with the Commonwealth Edison Company... Carl G. Anderson, '30, is employed by the Bell Research Lab. in New York City.

Vern Sturm, '30, is in Schenectady working for General Electric, Jack Hurley, '30, is at Pensacola, Fla... Lee Britton, '28, is with the Oklahoma Inspection Bureau at Tulsa... Norm Buehling, '30, is connected with the Milwaukee Electric Crane and Hoist Co. at Milwaukee... Morris Nelson, '30, is also working in Milwaukee... Al Schrage, '30, is in the engineering department of Marsh and McLennan... Percy Boynton, '30, is in New York City working for Du Pont... George Crapple, '28, is employed by the Adolf Gobel Co. as a chemist, and resides in New York City... Harvey Dozols, '29, is in the Telephone Engineering Equipment division of the Illinois Bell Telephone Co., here in Chicago... Vern Stearnrod, '29, is with the Kansas Inspection Bureau at Wichita.

Harvey Goranson, '29, is with the Tennessee Inspection Bureau at Chattanooga... Leon Fischman, '30, is doing topographical work for the Stone-Webster Company at St. Louis... Clarence Rosenquist, '30, is auto-touring the country... Harry Nissen, '29, is an engineer for the Berliner-Joyce Aircraft Corporation at Baltimore, Md.

A number of photographs of stars, sun spots, and kindred subjects taken by Francis Gladhelm Pease, '01, are now on exhibit in the Adler Planetarium in Grant Park. Dr. Pease received his B. S. in electrical engineering from the Institute in 1901, his Master's degree in 1924, and in 1927 the Institute conferred the honorary degree of Doctor of Science upon him.

Jacobson, '29 New Faculty Member

Joel M. Jacobson, who is taking the place of Mr. Pearce as an instructor in the Civil Engineering department, is a graduate of the Armour Institute, class of '29, with a degree of B.S. in Civil Engineering.

While in attendance at the Institute, Jacobson was active on the staff of the News as a special feature writer, and belonged to the Rifle Club, and the Armour branch of the Western Society of Engineers. He is affiliated with Kappa Delta Tau.

Since his graduation, Jacobson has spent his time as a designer for the Fairchild Airplane Company at Farmingdale, Long Island, New York.

Chem Lab Enlarged During Summer Months

The Electro-chemistry laboratory on the third floor, which was always rather cramped for space, has been expanded during the summer to more than twice its former size. In order to make room for the enlarged laboratory it was necessary to change the location of Room H, a recitation room, from the Main Building to Chapin Hall.

Frank Oster to Present Bound Volume to Ripley

Frank Oster, Custodian of Buildings, is working on another collection of newspaper clippings similar to those which in the past have brought him considerable note. The collection this time is made up of the "Believe It or Not" series which is being published daily in the *Herald and Examiner*. Mr. Oster is mounting the clippings in book form, and on completion of the series will present the volume to Mr. Ripley, the creator of "Believe It or Not".

Mr. Oster is also making a collection of Calvin Coolidge's daily articles which he will put in book form and present to the author.

Action on the petition of Flask and Beaker, chemical engineering fraternity, to Alpha Chi Sigma has been delayed until this fall. The local fraternity is petitioning for the formation of a chapter of the national fraternity here at Armour Institute.

DICTIONARY OF CHEMICAL EQUATIONS

Containing twelve thousand completed and balanced chemical equations, classified and arranged for ready reference. It is no more difficult to find a desired equation in this book than it is to find a word in the Standard Dictionary.

"TECH" BOOKSTORE 3300 Federal St., Chicago, Ill.

ALICE RESTAURANT
3117 WENTWORTH AVENUE
WHERE QUALITY AND SERVICE REIGN SUPREME
HOME COOKING

DR. L. A. SASKOR
DENTIST
3042 WENTWORTH AVENUE
FOUR DOORS FROM CORNER
OFFICE HOURS: 10 A. M.-8 P. M.—WEDNESDAY AND SUNDAY BY APPOINTMENT

Charter House
Presents a New
Semi-Peak Lapel for College Men
YOUNG FELLOWS WHO DRESS IN GOOD TASTE, AND WHO PURCHASE ECONOMICALLY, HAVE ACCEPTED CHARTER HOUSE CLOTHES ALMOST UNANIMOUSLY. INTERESTING ASSORTMENTS WHICH INCLUDE THE NEW SEMI-PEAK LAPEL COAT IN CHEERFUL FALL COLORS, AS WELL AS SMART EFFECTS IN BLUES AND OXFORDS ARE READY NOW—IN THE LYTTON COLLEGE SHOP—AND OUR SUBURBAN STORES.
\$40
THE HUB
HENRY C. LYTTON & SONS
Chicago Store STATE AT JACKSON
Suburban Stores EVANSTON OAK PARK GARY

JUST OPENED
THE MOTORISTS' CAFE
MICHIGAN AVE. AT 33RD
STRICTLY AMERICAN HOME COOKING